

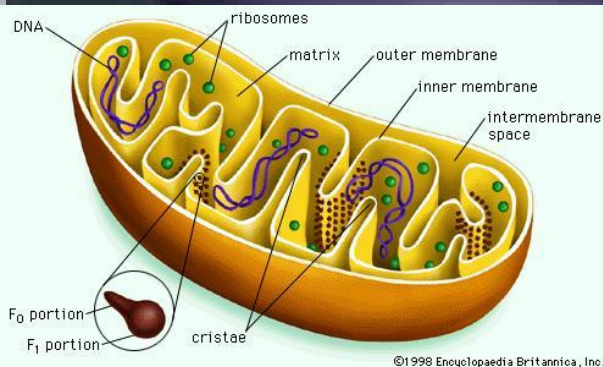


Energy Processing

By: Emily, Channon, Brianna, Asia, Sade', Anita

Mitochondria

Emily and Channon



Mitochondria Function :

Mitochondria is the power of plants of the cell. It converts chemicals energy stored in food in compounds for the cell. The Mitochondria makes compounds more suitable for the cells. The Mitochondria has two membranes, which is the outer membrane and an inner membrane

Study tips: mitochondria is like electricity and the cells of the plants are your phone. The electricity (mitochondria) powers your phone (cell on the plants).

Mitochondria is present :

In both plants and animals with makes it eukaryote.



CHLOROPLAST

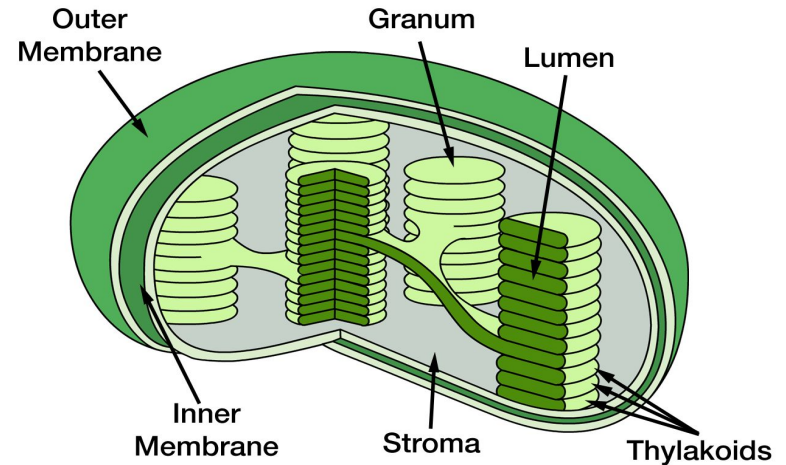
Chloroplasts convert energy to chemical energy found in food.

Present in only plants.

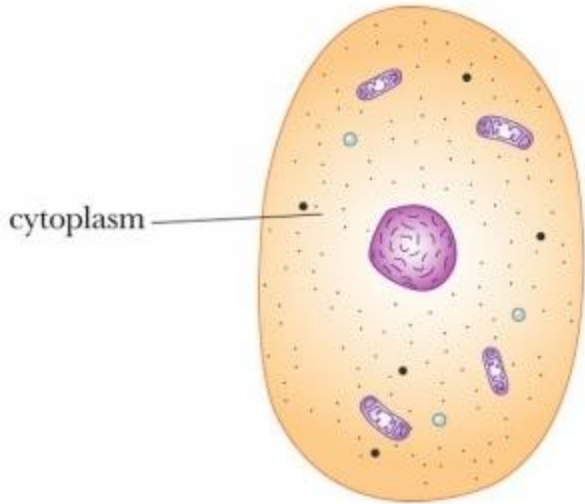
How to remember the Chloroplasts: there are two 'o's in food and two 'o's in chloroplast. If you can remember this then you should be able to remember what it does.



Chloroplast



CYTOPLASM



Asia & Sade'

Cytoplasm Function :

Breaks down waste and it aids in metabolic activity.

Cytoplasm helps you poop



CYTOPLASM IS PRESENT IN:

Plants



Animals



Bacteria

