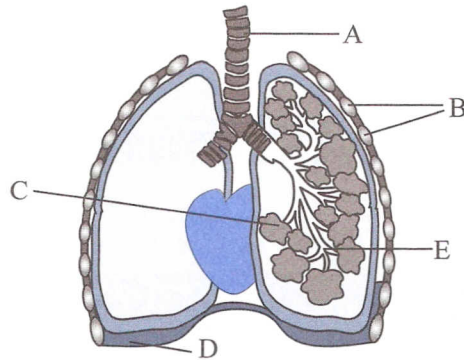


## Lungs and Breathing

**Q1** The diagram below shows the **respiratory system** of a human.



- Name structures **A — E**.
- Which **two gases** are exchanged in the lungs?
- Describe the mechanism by which air is drawn **into the lungs**.
- Describe the mechanism by which air is forced **out of the lungs**.

**Q2** When air is breathed in through the nose or mouth, it passes through parts of the breathing system to the alveoli.

Write down these parts of the respiratory system in the **correct order**:

bronchioles      trachea      bronchi      alveoli

**Q3** Answer these questions about air passages:

- Give **another name** for the trachea.
- The trachea splits into smaller air passages called **bronchi** (one on its own is called a **bronchus**). **How many** bronchi are there in each lung?
- What is a **bronchiole**?
- What is an **alveolus**?

***Make sure you know the diagram...***

Here's another diagram you have to be able to label. You need to know how air gets in and out (remember, it's all about pressure) and how it gets from the trachea to the alveoli. Phew.