

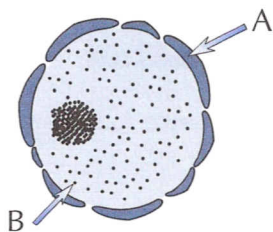
Functions of Organelles

Q1 Describe what an **organelle** is.

Q2 **Copy and complete** the following table showing the functions of various structures found in cells. The first one has been done for you.

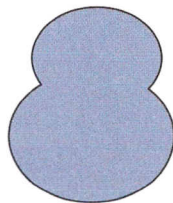
STRUCTURE	Mitochondrion	Cell membrane	Chloroplast	Cell wall	Nucleus
FUNCTION	To release energy from food				

Q3 The diagram below shows a nucleus.



- Copy the diagram, replacing **A** and **B** with the correct labels.
- Where** in the nucleus is **DNA** contained?

Q4 The diagram below represents an organelle involved in the manufacture of **proteins**.



- Name** the type of organelle represented by the diagram.
- This organelle is found in the cytoplasm of a cell. Give the **two** ways in which it can be found in the cytoplasm.

Q5 Two cells are taken from different places in the body of an animal. Cell A is found to contain **many** mitochondria. Cell B contains **few** mitochondria.

- Which cell, A or B, is more likely to be an **active** cell that requires a lot of **energy**?
- Explain** your answer to part a).

Organelles are like prisoners — they're found in cells...

Make sure you know the difference between all the similar-sounding words: organs, organ systems, organisms, etc. — and double-check that you can draw a diagram for each organelle too.