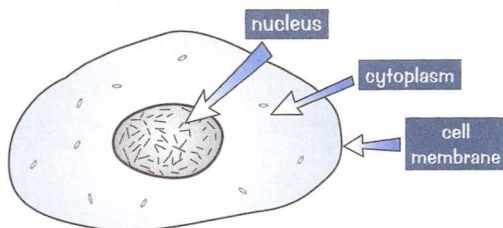


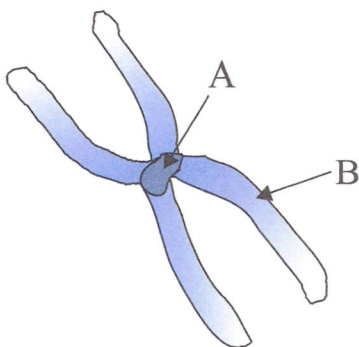
Genes, Chromosomes, and DNA

Q1 This diagram shows a typical animal cell.



- What **part** of the cell are chromosomes found in?
- If this was a human cheek cell, **how many** chromosomes would there be inside it?
- What **chemical** are chromosomes made of?

Q2 The diagram below represents the structure of a **human chromosome**.



- Name** the parts of the chromosome labelled A and B.
- Explain why the chromosomes in body cells occur in **pairs**.

Q3 Which of the diagrams below represents the shape of a **DNA** molecule?

Diagram A

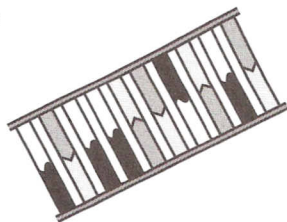
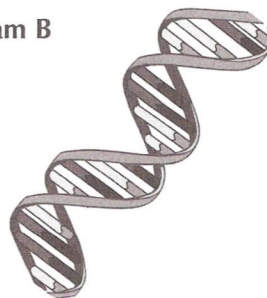


Diagram B



Q4 Answer these questions on genes:

- Explain what a **gene** is.
- Genes can also be called alleles. When would you use the term **allele** instead of **gene**?